

Vidya Bhawan Balika Vidyapeeth Lakhisarai

Arun Kumar Gupta

Class 12th

Subject Biology

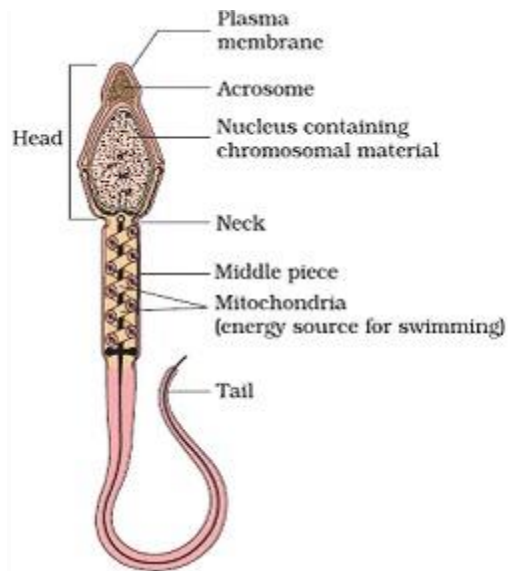
Date:-16.05.2021

Human Reproduction

Hormonal control of spermatogenesis

- Spermatogenesis initiated due to increase in secretion of gonadotropin releasing hormone by hypothalamus
- Increase in GnRH act on anterior pituitary and stimulate secretion of two gonadotropins, LH and FSH
- LH acts on Leydig cells and stimulates them to secrete androgens.
- FSH acts on Sertoli cells, stimulates secretion of some factors which help in spermiogenesis

Structure of sperm- sperm is a microscopic structure composed of a **head**, **neck**, a **middle piece** and a **tail**. The sperm head contain elongated haploid nucleus, anterior portion of which is covered by cap like structure **acrosome**.



Human male ejaculates about 200-300 million sperms during a coitus. The seminal plasma along with the sperms constitutes the semen. The function of male sex secondary ducts and glands are maintained by androgen hormones.